



SABRE  AG

## Front Linkage & Front PTO

*Robust Design*

*Sophisticated Technology*

*Best Quality*

**1300 WALTER**



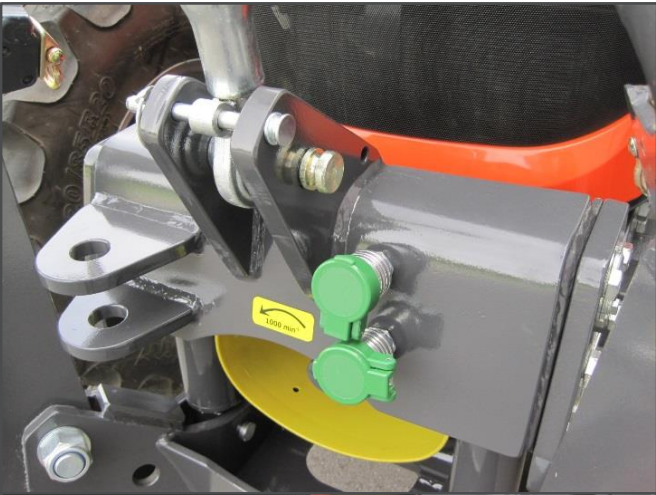


# M 8560 – 9960





# M 6060 – 7060





### Front Linkage:



Completely integrated system



Lower links fold inward diagonally



Absolute ground clearance

- ▶ Robust and sophisticated design conceived for the heaviest of accessory equipment and long operating hours
- ▶ Optimally adapted and designed to integrate with your KUBOTA – tractor
- ▶ Highly stable due to frame up to clutch housing
- ▶ Steering angle and ground clearance completely maintained
- ▶ Lower links standardly equipped with Walterscheid link hooks
- ▶ Stable and warp resistant lifting frame – lower links are serially foldable up (without tools) and removable
- ▶ Enhanced float adapter for the best ground adjustment of your front equipment – can be locked without tools
- ▶ All bearings and pivots can be greased
- ▶ Cylinders with hardened and hard-chrome plated piston rods
- ▶ Standard shunt coupling and spindle top link
- ▶ Simple, quick assembly



Stable frame up to clutch housing – Absolute front axle oscillation and steering angle



### **Front PTO:**

- ▶ Completely in your tractor integrated unit
- ▶ Designed for the heaviest of long-term loads – transfer of full motor power is easily possible
- ▶ Hydraulic front PTO clutch for a smooth and gentle start-up of your front-end implements
- ▶ Switch –on and –off by a push-button
- ▶ PTO shaft can be manually turned for easy coupling
- ▶ Simple, quick assembly – front PTO can also be retrofitted without any problems



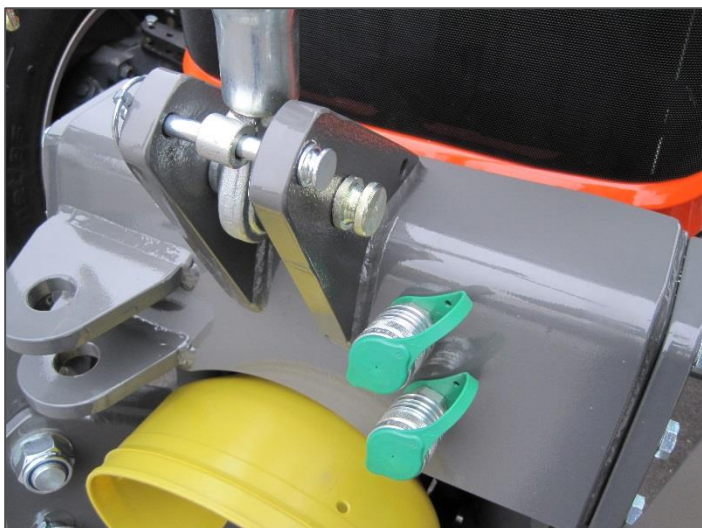
Front Linkage and PTO is a compact unit

### **Accessories:**

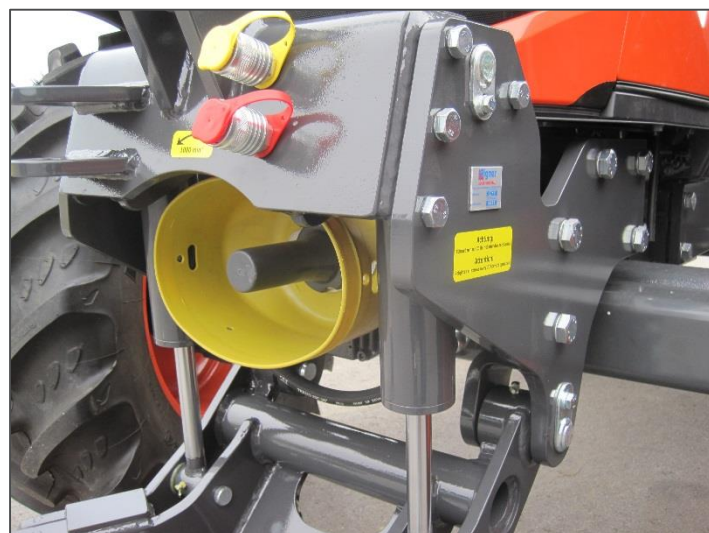
- ▶ Quick coupling triangle cat. 2 with upper role
- ▶ Hydraulic accumulator
- ▶ Multivalve: double acting – single acting – locked (transport protection)
- ▶ Brackets for mower relief springs
- ▶ Additional hydraulic connections in front
- ▶ Ballast weights and supporting frames for basic weight of the tractor
- ▶ Further option range for municipal use



Switched on by push button



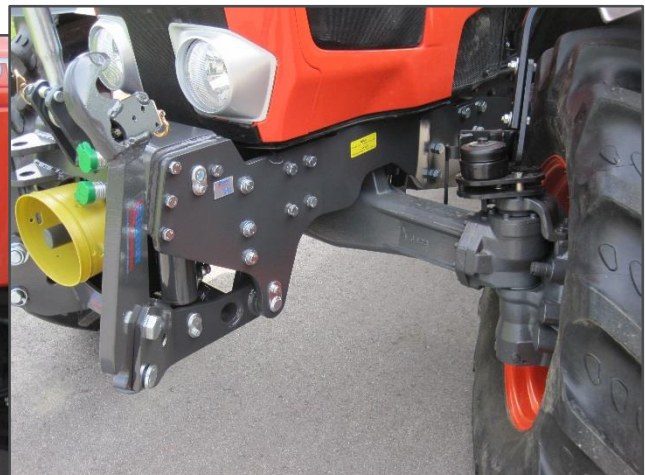
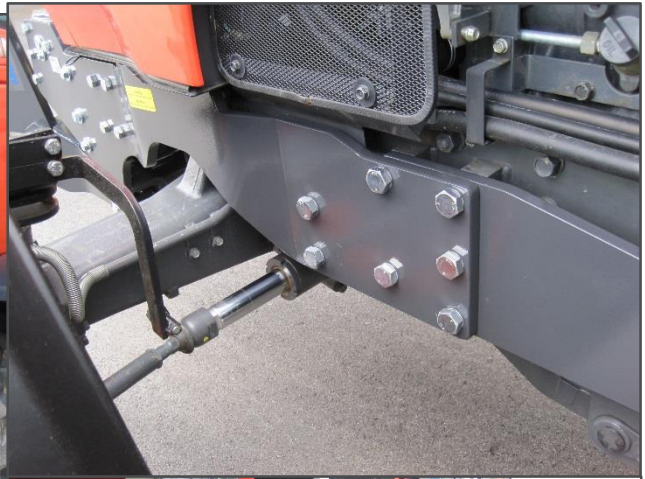
Holder for top link – integrated hydraulic connections



PTO-shaft mounted deep inside the front unit



# M 110 – 135 GX





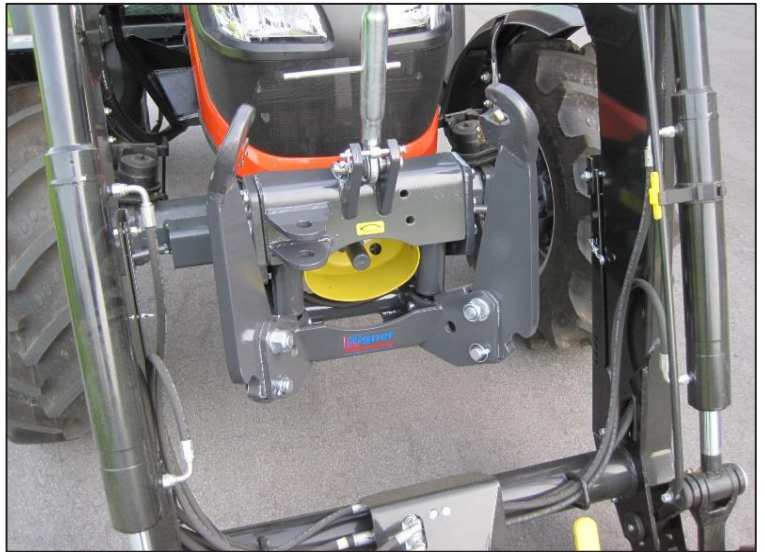
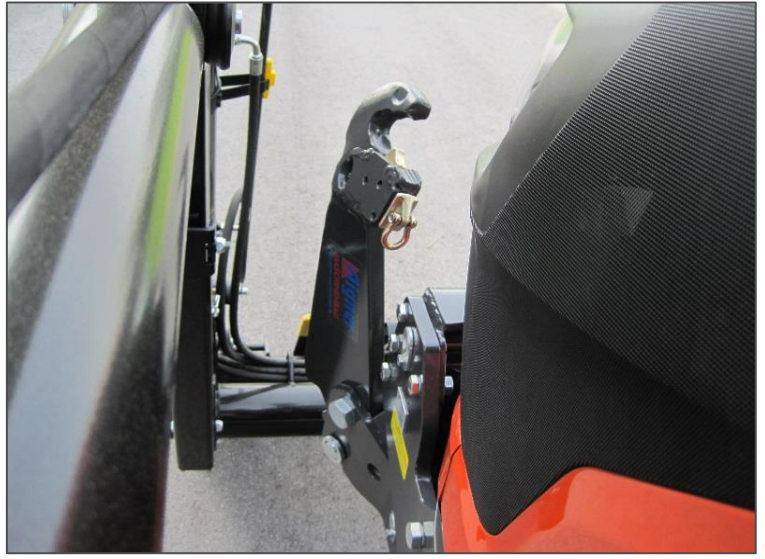
# M 6040 – 7040 Narrow



# M 8540 Narrow







Also available for wineyard- and orchard-tractors

Optimally co-ordinated also for combination front linkage with front loader

Technical Data:	M 6040 – 7040	M 6060 – 7060	M 8540 – 9540	M 8560 – 9960	M 110 – 135GX	M 6040 – 7040 Narrow	M 8540 Narrow
Front linkage Category	Cat. 2	Cat. 2	Cat. 2	Cat. 2	Cat. 2	Cat. 2	Cat. 2
Lifting force at the link hook	24 kN	24 kN	30 kN	30 kN	30 kN	18 kN	18 kN
Double acting lifting cylinders	on request	on request	on request	on request	on request	on request	on request
Lower link hooks	Walterscheid Cat. 2	Walterscheid Cat. 2	Walterscheid Cat. 2	Walterscheid Cat. 2	Walterscheid Cat. 2	Walterscheid Cat. 2	Walterscheid Cat. 2
PTO shaft speed	1000 rpm						
Direction of rotation	clockwise in driving direction						
PTO shaft profile	DIN 9611 1 3/8"						

## Contact Walterscheid Australia:

17-31 Discovery Road, Dandenong South, Victoria 3175 | **Phone:** (03) 9580 7300 **Fax:** (03) 9580 0379  
 10a Duncan Street, Montrose, Tasmania 7010 | **Phone:** (03) 6272 2255 **Fax:** (03) 6272 0671  
 12a Pradella Street, Darra, Queensland 4076 | **Phone:** (07) 3117 2850 **Fax:** (07) 3117 2851  
 43 Margaret Vella Drive, Mackay, Queensland 4740 | **Phone:** (07) 4914 2150 **Fax:** (07) 4914 2199  
 602 Ingham Road, Bohle, Queensland 4818 | **Phone:** (07) 4795 3450 **Fax:** (07) 4795 3499  
 2 Canavan Drive, Beresfield, New South Wales 2322 | **Phone:** (02) 7909 5150 **Fax :** (02) 7909 5195  
 13 Glastonbury Avenue, Unanderra, New South Wales 2526 | **Phone:** (02) 4229 2381 **Fax :** (02) 4226 3016  
 Unit 2, 479 - 481 South Road, Regency Park, South Australia | **Phone:** (08) 7088 8980 **Fax:** (08) 8349 5264  
 49 Banksia Road, Welshpool, Western Australia 6106 | **Phone:** (08) 6189 8050 **Fax:** (08) 9258 6311  
 10 Shanahan Road, Bunbury, Western Australia 6230 | **Phone:** (08) 9725 7033 **Fax:** (08) 9725 7044  
**Website:** [www.walterscheid.com.au](http://www.walterscheid.com.au) | **Email:** [walterscheid@walterscheid.com.au](mailto:walterscheid@walterscheid.com.au)