



SABRE  AG

Front Linkage & Front PTO

Robust Design

Sophisticated Technology

Best Quality

1300 WALTER

VALTRA

Individually Yours

N 93 – N 103



N 113 – N 163



T 133 – T 213





Completely integrated system



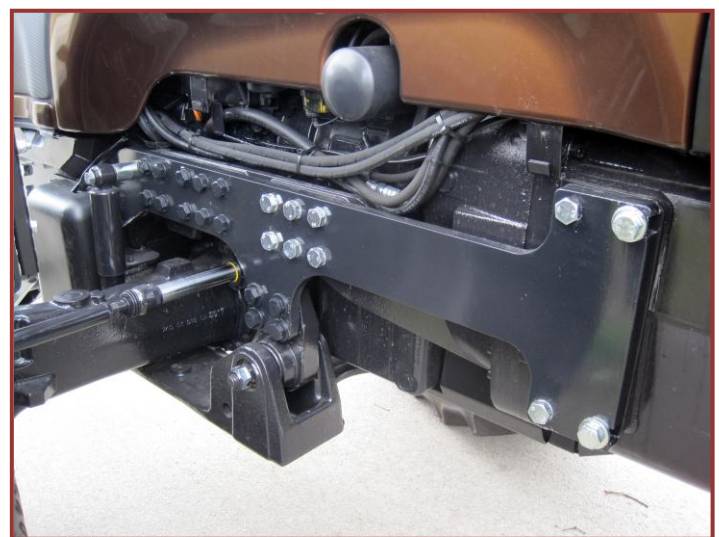
Lower links fold inward diagonally



Absolute ground clearance!

Front Linkage:

- Robust and sophisticated design conceived for the heaviest of accessory equipment and long operating hours
- Optimally adapted and designed to integrate with your VALTRA –Tractor
- Highly stable due to frame up to clutch housing
- Steering angle and ground clearance completely maintained
- Lower links standardly equipped with Walterscheid link hooks
- Stable and warp resistant lifting frame – lower links are serially foldable up (without tools) and removable
- Enhanced float adapter for the best ground adjustment of your front equipment – can be locked without tools
- All bearings and pivots can be greased
- Cylinders with hardened and hard-chrome plated piston rods
- Standard shunt coupling and spindle top link
- Simple, quick assembly!



Stable side panels up to clutch housing

Front PTO:

- Completely in your tractor integrated unit
- Designed for the heaviest of long-term loads – transfer of full motor power is easily possible!
- Hydraulic front PTO clutch for a smooth and gentle start-up of your front-end implements
- Switch –on and –off by a push-button
- PTO shaft can be manually turned for easy coupling
- Simple, quick assembly – front PTO can also be retrofitted without any problems!



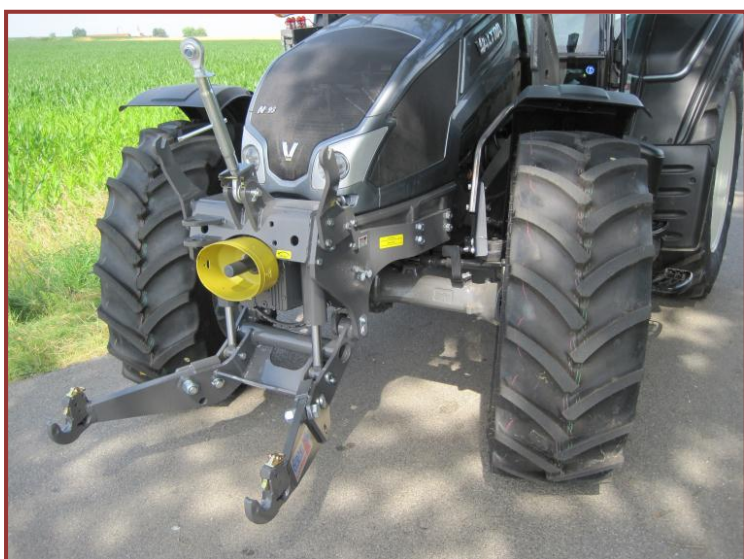
Front linkage and PTO are a compact unit

Accessories:

- Quick coupling triangle cat. 2 with upper role
- Front linkage remote control (only with electr. control unit)
- Hydraulic accumulator
- Multivalve: double acting – single acting – locked (transport protection)
- Brackets for mower relief springs
- Additional hydraulic connections in front
- Ballast weights and supporting frames for basic weight of the tractor
- Further option range for municipal use



Switch –on by a push-button

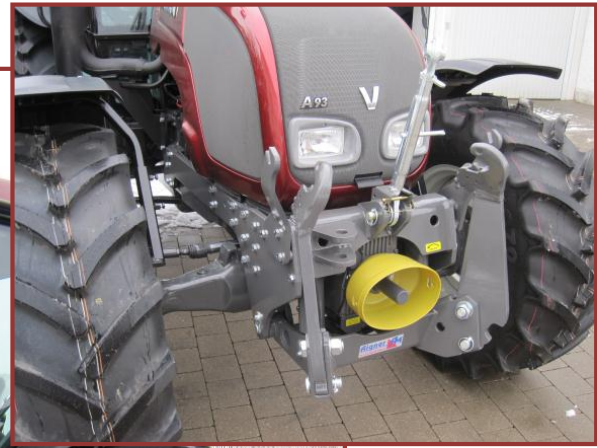


Holder for top link
standard for all types



Front linkage remote control
(only with electr. control unit)

A 83 – A 93 A 72 – A 92



VALTRA – MUNICIPAL





Steering angle and the front axle oscillation completely maintained!



All information and illustrations herein are approximate and not binding. Subject to modifications!

Technical Data:	A 83 – A 93 A 72 – A 92	N 82 – N 92	N 93 – N 103	N 101 – N 142	N 113 – N 163	T 133 – T 213 T 121 – T 202
Front linkage cat.	cat. 2	cat. 2	cat. 2	cat. 2	cat. 2	cat. 2
Lifting force at link hook	27 kN	27 kN	27 kN	27 kN / 40 kN	40 kN	40 kN
Double acting lifting cylinders	on request	on request	on request	standard	standard	standard
Lower link hooks	Walterscheid cat. 2	Walterscheid cat. 2	Walterscheid cat. 2	Walterscheid cat. 2 / 3L	Walterscheid cat. 3L	Walterscheid cat. 3L
PTO shaft speed	1000 rpm.					
Direction of rotation	Clockwise in driving direction					
PTO shaft profile	DIN 9611 - 1 3/8"					

Contact Walterscheid Australia:

17-31 Discovery Road, Dandenong South, Victoria 3175 | **Phone:** (03) 9580 7300 **Fax:** (03) 9580 0379
 10a Duncan Street, Montrose, Tasmania 7010 | **Phone:** (03) 6272 2255 **Fax:** (03) 6272 0671
 12a Pradella Street, Darra, Queensland 4076 | **Phone:** (07) 3117 2850 **Fax:** (07) 3117 2851
 43 Margaret Vella Drive, Mackay, Queensland 4740 | **Phone:** (07) 4914 2150 **Fax:** (07) 4914 2199
 602 Ingham Road, Bohle, Queensland 4818 | **Phone:** (07) 4795 3450 **Fax:** (07) 4795 3499
 2 Canavan Drive, Beresfield, New South Wales 2322 | **Phone:** (02) 7909 5150 **Fax :** (02) 7909 5195
 13 Glastonbury Avenue, Unanderra, New South Wales 2526 | **Phone:** (02) 4229 2381 **Fax :** (02) 4226 3016
 Unit 2, 479 - 481 South Road, Regency Park, South Australia | **Phone:** (08) 7088 8980 **Fax:** (08) 8349 5264
 49 Banksia Road, Welshpool, Western Australia 6106 | **Phone:** (08) 6189 8050 **Fax:** (08) 9258 6311
 10 Shanahan Road, Bunbury, Western Australia 6230 | **Phone:** (08) 9725 7033 **Fax:** (08) 9725 7044
Website: www.walterscheid.com.au | **Email:** walterscheid@walterscheid.com.au