

TRACTOR HITCH SYSTEMS

The Walterscheid Tractor Hitch System is a modular coupling system allowing many various combinations for different region requirements in the International Agriculture market. The modular K80 Ball Coupling System has been developed over time setting new standards in safety and convenience for driving drawn implements like trailers, loader wagons and spreaders with high drawbar loads.

The modular system consists of support frames (also known as ladders), adjustable coupler inserts with either a ball or pin, drawbars, accessories and various components. Contact your nearest Walterscheid sales centre to ensure the correct hitch system for your tractor.

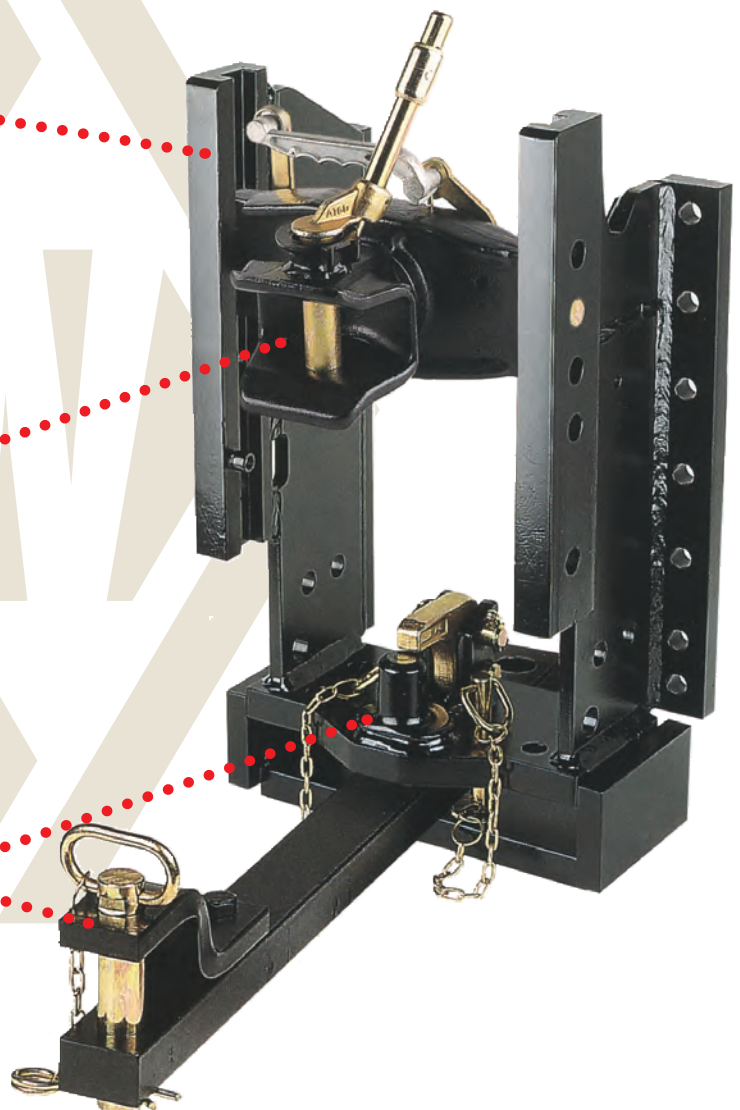
SUPPORT FRAMES

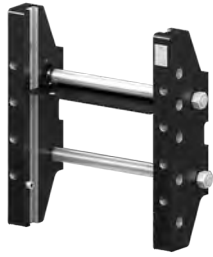


ADJUSTABLE COUPLER INSERTS WITH BALL OR PIN



DRAWBARS, ACCESSORIES AND COMPONENTS



SUPPORT FRAMES (LADDERS)


Short Ladder Frame



Long Ladder Frame

COUPLER SUPPORT FRAMES (LADDER)

- Short & Long Frames
- Frames with 80mm Ball & Guide
- Frames with Piton-Fix
- Frames with Drawbar Support

The modular support frames are designed to accommodate a large variety of combinations to suit all tractor applications and hitch requirements.

With an extensive growing range of different frames, please contact your local Walterscheid Branch with all your requirements to ensure the correct hitch system for your tractor.

All systems can be fitted with fixed or adjustable coupler inserts to suit K80 Ball Cup or various Ring Eyes. Drawbar options are also available for selected models.



Ladder Frame with Piton Fix & Drawbar Option



Ladder Frame with Piton Fix



Ladder Frame with Piton Fix & Drawbar Option



Long Frame with Adjustable Pin Type Insert & Fixed 80mm Ball



Ladder Frame with Piton-Fix & Drawbar Option Fitted



Long Ladder Frame with fixed 80mm Ball

HITCH ADJUSTABLE COUPLER INSERTS**K80 BALL HITCH INSERTS**

Flange Mount Coupling
with K80 Ball Type



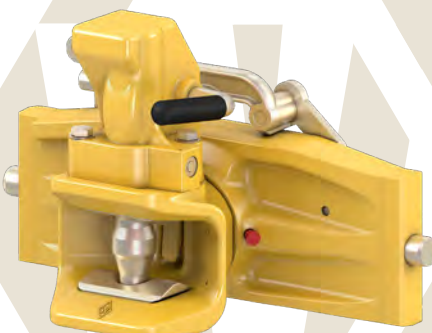
Pin Lock Adjustable Coupling
with K80 Ball Type



Pin Lock Adjustable Coupling
with K80 Ball Type

CYLINDRICAL PIN HITCH INSERTS

Flange Mount Coupling
with Cylindrical Pin Type



Pin Lock Adjustable Coupling
with Cylindrical Pin Type



Pin Lock Adjustable Coupling
with Cylindrical Pin Type

STRAIGHT PIN HITCH INSERTS

Flange Mount Coupling
with Straight Pin Type



Pin Lock Adjustable Coupling
with Straight Pin Type



Pin Lock Adjustable Coupling
with Straight Pin Type



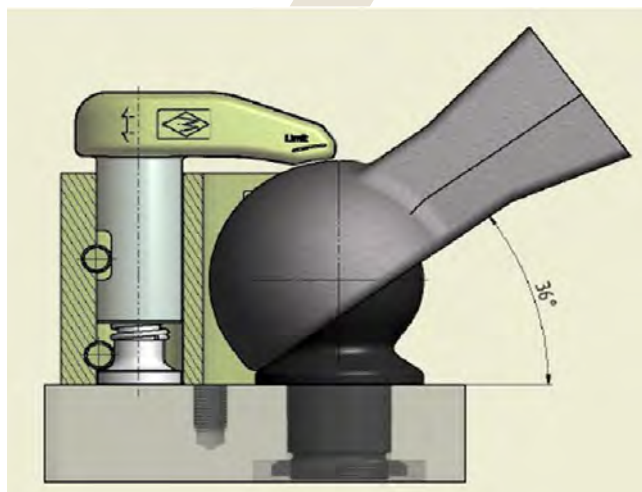
Couplings from Walterscheid are made from forged parts designed for heavy duty conditions.

Forged tool-free locking device is designed to compensate high negative forces. The locking device can rotate 360 degrees allowing easy connection.

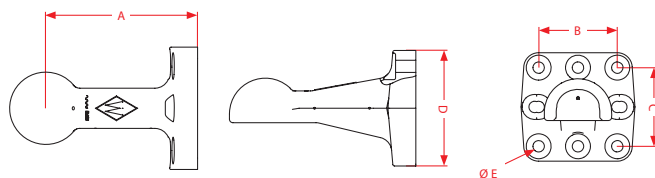
DRAWBARS

	<p>Straight Drawbar with 80mm ball</p> <p>The straight drawbar is a great alternative for conventional Pin type drawbars that handles higher vertical loads & pulling forces. It also eliminates any shocks & bounces during driving and working in the field. It can be used in combination with a standard PTO Shaft or a smaller size Wide-Angle PTO Shaft.</p>
	<p>Curved Drawbar with 80mm ball</p> <p>The curved drawbar has the same characteristics as the straight drawbar. Additionally, due to the lowered location of the ball it gives more clearance for the Wide-Angle PTO Shaft. It is especially an advantage if a large Wide-Angle PTO Shaft is used in the application.</p>
	<p>Curved Drawbar with extra support of 80mm ball</p> <p>The curved drawbar with the extra support is designed for heavy duty applications where high pulling forces are required. The support plate sits level on the drawbar.</p>
	<p>Curved Drawbar with heavy duty support of 80mm ball</p> <p>The curved drawbar with the heavy-duty support is designed for applications in tough field conditions (hard soil / clay) where heavy machinery is used and high pulling forces are required. This drawbar is designed for large tractors with 350HP and more. The support plate sits on a 15-degree angle.</p>

Note: There are many drawbar options available, please contact Walterscheid Australia for the correct fitment for your application.

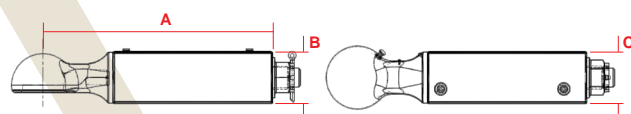


TOWING SOCKETS K80 BALL CUP



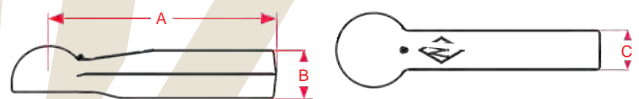
80mm Flange Ball Cup

Part No.	Vertical Load (Maximum)	A	B	C	D	E	Bolt Hole Qty	
		mm						
8003309	3000 daN	250	100	110	154	17	8	
00.664.91.1-A02	3000 daN	250	120	120	162	20	4	
8003310	4500 daN	260	145	145	200	20	8	
00.665.90.1-A02	4000 daN	250	160	160	200	20	12	
00.665.90.3-A02	6000 daN	250	160	160	200	20	12	



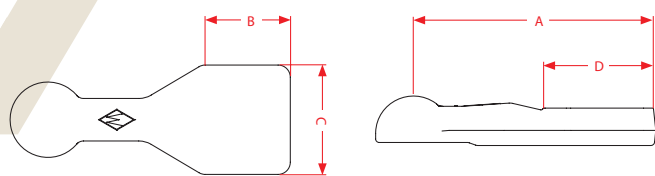
80mm Swivel Ball Cup

Part No.	Vertical Load (Maximum)	A	B	C				
		mm						
00.663.931.0	4000 daN	571	102	102				



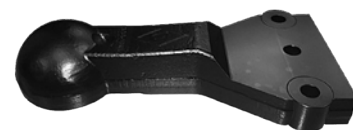
80mm Weld On Ball Cup

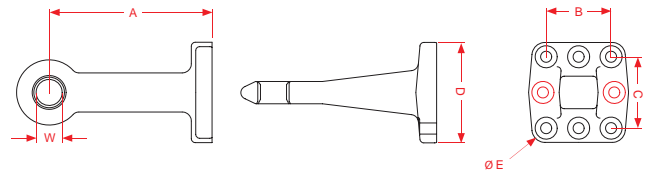
Part No.	Vertical Load (Maximum)	A	B	C				
		mm						
00.651.91.1	2000 daN	375	80	65				
00.651.90.0	1500 daN	336	80	65				



80mm Weld On Ball Cup Flat

Part No.	Vertical Load (Maximum)	A	B	C	D			
		mm						
8004642	2000 daN	385	145	180	185			

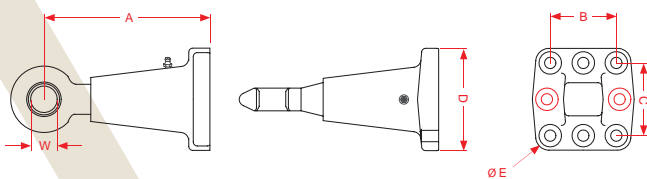


TOWING RING EYES

Ring Eye Flange with Bush

Part No.	Vertical Load (Maximum)	A	B	C	D	E	Bolt Hole Qty	W
		mm						
8000616	2500 daN	240	100	110	154	17	6	40
8000537	2500 daN	250	100	110	154	17	8	50
8003466	3000 daN	246	145	145	200	20	8	40



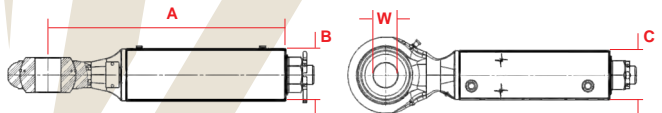
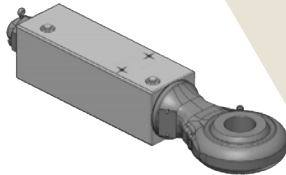
With Swivel Bush


Swivel Ring Eye Flange

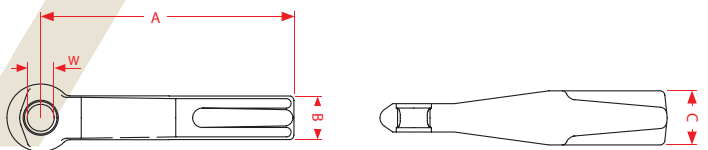
Part No.	Vertical Load (Maximum)	A	B	C	D	E	Bolt Hole Qty	W
		mm						
8005146	3000 daN	268	100	110	154	17	4	50
8005147	3600 daN	268	145	145	200	20	8	50

Swivel Ring Eye Flange with Swivel Bush

8005577	3000 daN	348	145	145	200	20	8	50
---------	----------	-----	-----	-----	-----	----	---	----


Swivel Ring Eye with Swivel Bush

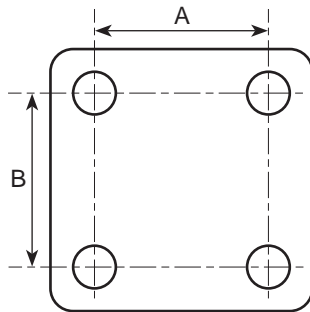
Part No.	Vertical Load (Maximum)	A	B	C				W
		mm						
00.663.17.0	3000 daN	571	102	102				50


Ring Eye Weld On with Bush

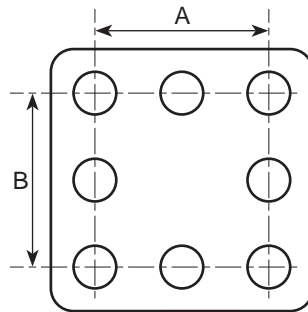
Part No.	Vertical Load (Maximum)	A	B	C				W
		mm						
8002252	2200 daN	350	65	80				40
8004931	1000 daN	380	70	80				50



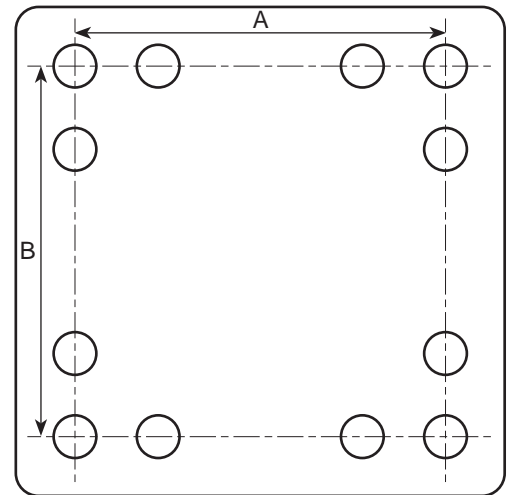
MOUNTING PLATES



4 Hole Pattern




8 Hole Pattern



12 Hole Pattern

Mounting Plate (Weldable)

	Part No.	A	B	Threaded Holes	Bolt Hole Qty	Notes
		mm				
	8003241	100	110	M16	8	
	8005500	120	120	M20	4	
	8004472	145	145	M20	8	
	8004835	160	160	M20	12	

*Additional mounting plates are available on request.

SPARE PARTS



REF #	PART NO.	DESCRIPTION
1	8002937	Complete Locking Device
2	8004852	Complete Basic Locking Device
3	8003635	Locking Device
4	8002153	Spring to suit Locking Device
5	8002154	Screw M20 to suit Locking Device
6	8003639	Pin 14x108mm
7	8002846	Allen Screw M16
8	8003164	K80 Ball incl. Locknut (non-weldable)
9	8004401	Locknut M48 x 1.5mm (Suit 8003164 Ball)
10	8004664	Ball Cover
11	8004588	Foam Ring
12	8004971	Special Socket 1/2" for Locknut
13	8005408	Power Steering Ball & Locking Device
14	8004669	Power Steering Pin & Locking Device